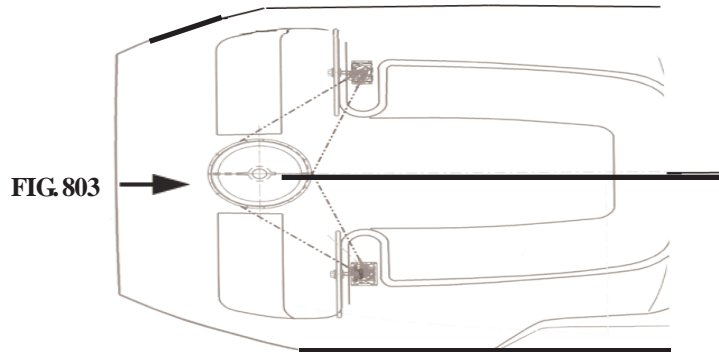
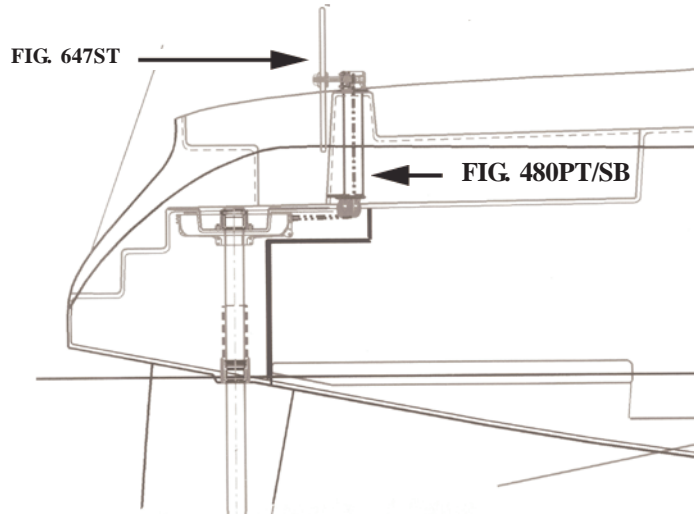
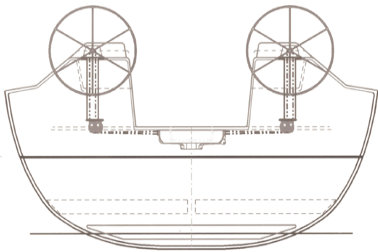




CATALINA 470

THIS SCHEMATIC IS INTENDED TO PROVIDE AN OUTLINE FOR DESIGNING YOUR SYSTEM. COMPLETE INSTRUCTIONS FOR INSTALLATION CAN BE FOUND IN OUR "PLANNING & INSTALLATION GUIDE", WHICH CAN BE FOUND ONLINE.



VISIT US ONLINE AT
WWW.EDSONMARINE.COM

1 FIG. 480PT-776-6AL
 1 FIG. 480SB-776-6AL
 2 FIG. 647ST-32-5
 2 FIG. 775-2B2D9
 1 FIG. 803-12
 1 FIG. 862-WIRE
 1 FIG. 960-A-1986
 4 FIG. 618-2-375
 8 FIG. 665ST-250
 4 FIG. 665ST-187
 4 FIG. 643-250

STEERER, PORT SIDE
 STEERER, STARBOARD SIDE
 DISHED DESTROYER WHEEL
 CHAIN & WIRE ROPE ASSEMBLY
 RADIAL DRIVE WHEEL
 RUDDER STOP, WIRE
 BUNGY STOP ABSORBER
 WIRE TAKEUPEYES
 WIRE ROPE CLAMPS
 WIRE ROPE CLAMPS
 WIRE ROPE THIMBLES